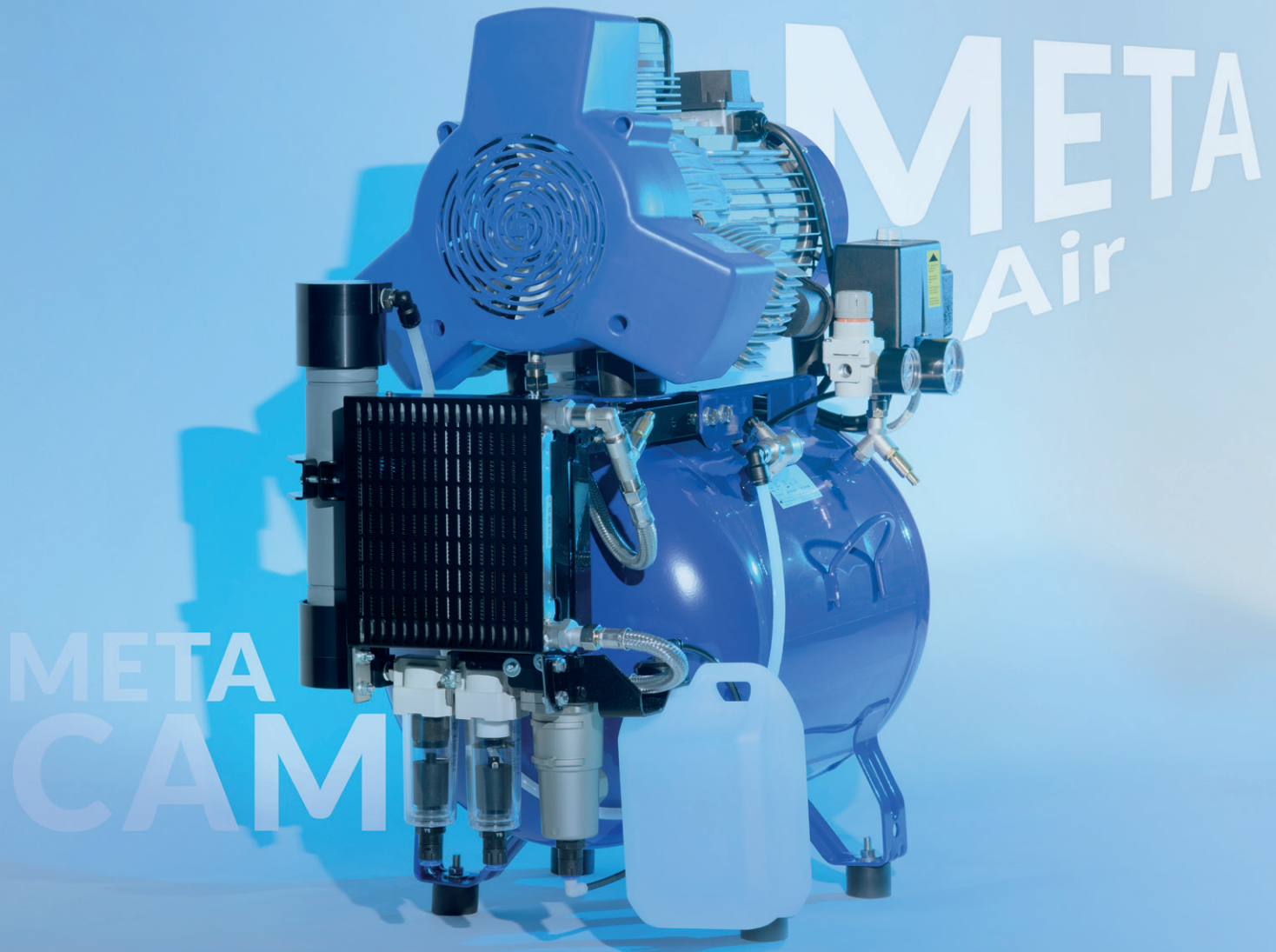


# Dental Compressors



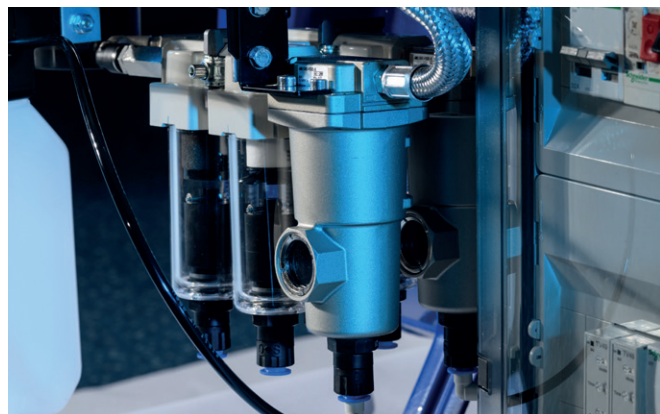
double filter system | powerful membrane dryer  
with double thermal protection

# RELIABLE SOLUTIONS FOR DENTAL PRACTICES

Compressed air used in dental practices must comply with highest sanitary and medical standards. This is why all METASYS compressors work absolutely oil-free and are equipped with an integrated filter and dryer system (except Light models).

## How do the Standard and Light versions differ?

	Light version	Standard version
Prefilter	✓	✓
Microfilter	-	✓
Dryer	-	✓



## Convincing details and sophisticated technology



### Filtration system

Double filter system with a rating of 0.01 µm

### Membrane dryer

Powerful drying system for absolutely dry air

### Compressor technology

Low noise operation and maximum pressure up to 10 bar

### Powder coating

Antibacterial inner tank powder coating to prevent corrosion

### Operating hours meter

To ensure the exact definition of maintenance intervals

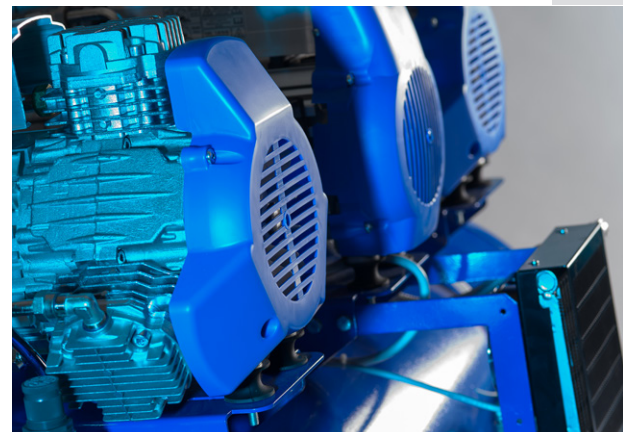
### Thermal protection

Double, amperometric and temperature control, for optimal safety

# FOR THE SMOOTH RUNNING OF YOUR PRACTICE

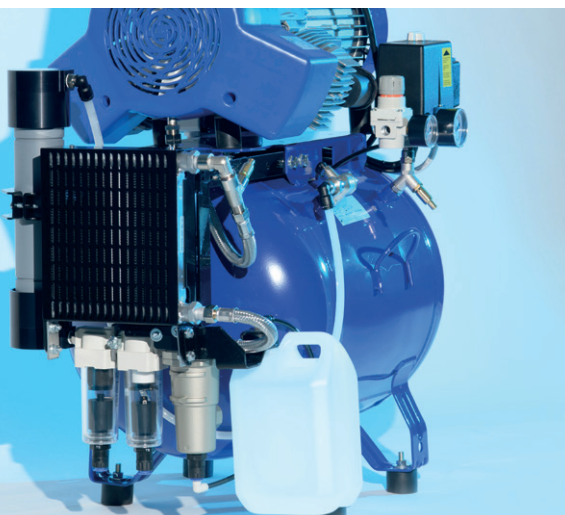
## 1 Conservation of value for compressed air operated instruments and equipment

Moisture in dental compressed air impairs adhesion and thus its durability. In addition, the humid environment provides optimal living conditions for microorganisms. Dry compressed air, on the other hand, prevents the formation of biofilm in the lines as well as corrosion on the compressor itself and the instruments connected to it. METASYS compressors are equipped with a powerful membrane filter system. Moisture in dental compressed air is thus effectively prevented even under the most challenging climatic conditions.



## 2 Best treatment results through hygienic compressed air

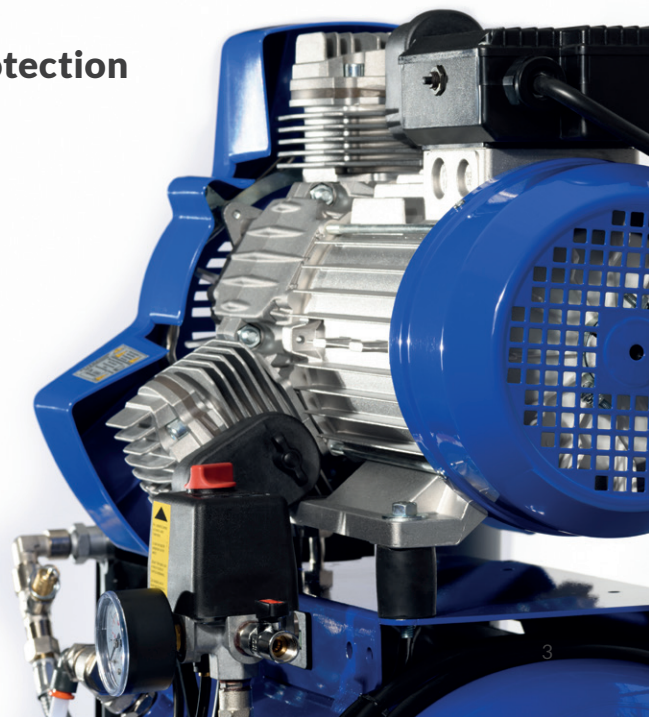
METASYS compressors operate completely oil-free. Oil-lubricated compressors are not suitable for use in dental practices: even the smallest traces of oil in the compressed air can negatively affect the durability of filling materials on tooth structure. At the same time, lubricating oil leads to deposits in the air lines. These cause a loss of performance and premature wear of compressors and compressed-air-powered instruments.



## 3 Optimum sanitary conditions for the protection of patient and treatment team

During dental treatment, compressed air comes into contact with open wounds. At the same time, the use of compressed air creates an aerosol cloud that poses a significant risk of infection for both practitioners and patients. Hygienic treatment of dental compressed air is thus essential.

METASYS compressors are equipped with a double filter system with a rating of  $0.01 \mu\text{m}$ .\* This ensures taste-neutral compressed air and optimal protection against infections.



\* In accordance with the compressed air requirements of ISO 8573\_1:2010.

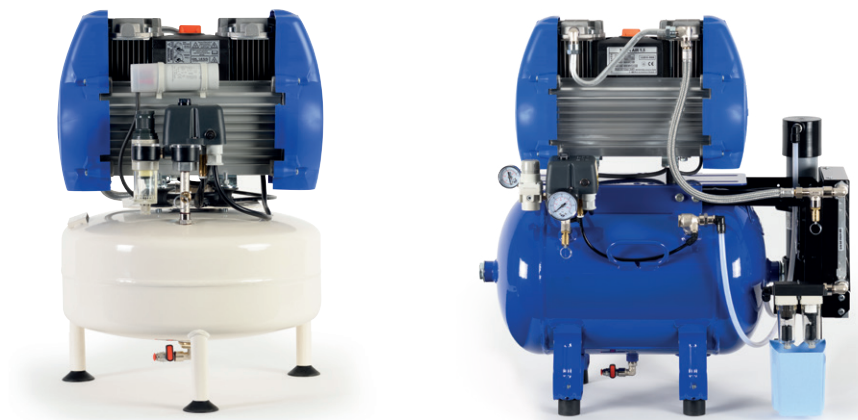
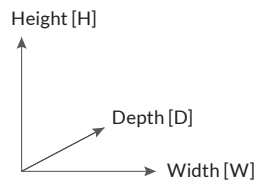
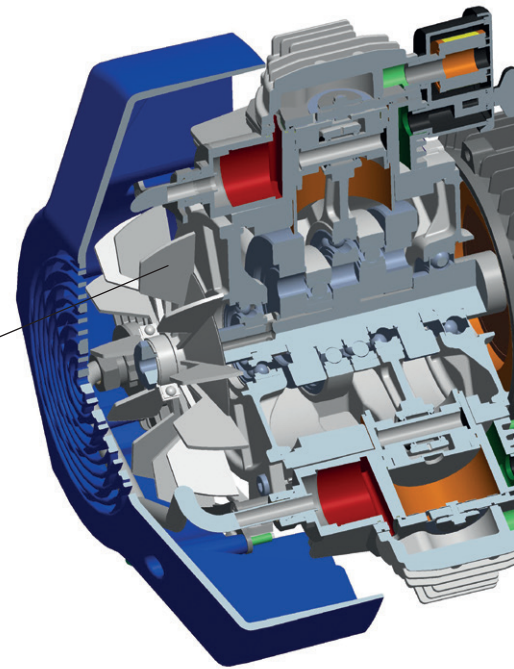
# SUPERIOR QUALITY IN EVERY DETAIL

## High-quality components for the most demanding applications

High-tech components in the electric motors ensure high efficiency and consistent motor performance during operation. Heat-resistant ball bearings ensure smooth operation and extend the service life of the entire unit.

## Patented intake system

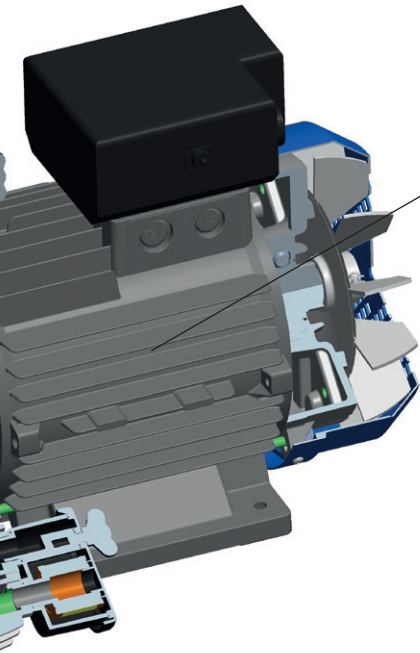
The intake air stream is channelled through a labyrinth of compressor components. This serves both to cool the motor and its components and to reduce intake noise. Numerous specially designed cooling fins on the outside of the unit also ensure optimized heat dissipation.



	META Air 24	META Air 24 Light	META Air 30	META Air 30 Light
Order no.	106000001	106000005	106000007	106000009
Power supply (V AC)	230 V	230 V	230 V	230 V
Frequency	50 Hz*	50 Hz*	50 Hz*	50 Hz*
Electric motor power	1.1 kW	1.1 kW	1.1 kW	1.1 kW
Delivery rate (5 bar)	120 l/min	135 l/min	120 l/min	135 l/min
Operating time	≤ 50 %	≤ 50 %	≤ 50 %	≤ 50 %
Tank capacity	24 l	24 l	40 l	40 l
Pressure range	5-7 bar	5-7 bar	5-7 bar	5-7 bar
Sound level	65 dB(A)	65 dB(A)	65 dB(A)	65 dB(A)
Sound level with soundproof cover	52 dB(A)	52 dB(A)	-	-
Dimensions (H x W x D)	600 x 500 x 420 mm	600 x 430 x 400 mm	770 x 710 x 410 mm	770 x 600 x 410 mm
Dimensions with soundproof cover (H x W x D)**	800 x 530 x 500 mm	800 x 530 x 500 mm	-	-
Weight	36 kg	29 kg	38 kg	42 kg
Weight with soundproof cover	-	-	-	-
Order no. with soundproof cover	-	-	-	-

\* also available with 60 Hz | \*\* The depth dimensions may vary if a condensate tank is present.

# TOP-NOTCH TECHNOLOGY



## Optimised compression process

METASYS compressors stand out thanks to another technical feature: each cylinder is fitted with its own air filter. This improves the filtration of the intake air and ensures that sufficient air volume is always available for compression. This optimised compression process extends the service life of the pistons.



## Performance and reliability

The motor is the core of any compressor. The interaction between the electric motor and the compressor ensures top performance. High-quality components guarantee reliability, even under the most demanding conditions. METASYS compressors consistently meet these requirements.



### META Air 150

106000011

230 V

50 Hz\*

1.5 kW

152 l/min

≤ 70 %

40 l

5-7 bar

66 dB(A)

53 dB(A)

770 x 710 x 410 mm

915 x 750 x 530 mm

50 kg

98 kg

106000012

### META Air 150 Light

106000015

230 V

50 Hz\*

1.5 kW

170 l/min

≤ 80 %

40 l

5-7 bar

66 dB(A)

53 dB(A)

770 x 600 x 410 mm

915 x 750 x 530 mm

46 kg

94 kg

106000016

### META Air 250

106000019

230 V

50 Hz\*

2.2 kW

225 l/min

≤ 70 %

40 l

5-7 bar

66 dB(A)

53 dB(A)

810 x 710 x 410 mm

915 x 750 x 530 mm

58 kg

106 kg

106000020

106000022

400 V

50/60 Hz

2.2 kW

250 l/min

≤ 80 %

40 l

5-7 bar

66 dB(A)

53 dB(A)

810 x 600 x 410 mm

915 x 750 x 530 mm

54 kg

102 kg

106000023

### META Air 250 Light

106000024

230 V

50 Hz\*

2.2 kW

250 l/min

≤ 80 %

40 l

5-7 bar

66 dB(A)

53 dB(A)

810 x 600 x 410 mm

915 x 750 x 530 mm

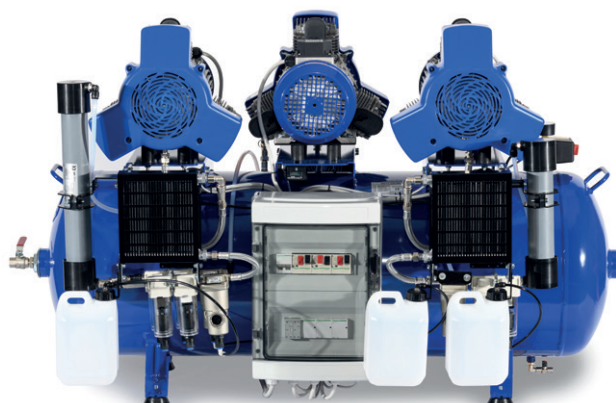
54 kg

102 kg

106000025

# COMPRESSORS FOR LARGE DENTAL PRACTICES

Large dental practices and dental laboratories require high-performance compressors that reliably deliver high volumes of compressed air. These compressors must ensure continuous operation even during intensive use over extended periods. The calculated tank capacities of these high-performance compressors guarantee a constant and uninterrupted air supply for efficient working. The METASYS META Air 450, 650 and 900 compressors meet these requirements to the highest standard and offer outstanding performance, reliability and durability for professional use in large dental practices and dental laboratories.



	META Air 450	META Air 450 Light
Order no.	106000027	106000030
Power supply (V AC)	230 V	400 V
Frequency	50 Hz*	50/60 Hz
Electric motor power	4.4 kW	4.4 kW
Delivery rate (5 bar)	450 l/min	450 l/min
Operating time	≤ 70 %	≤ 70 %
Tank capacity	90 l	90 l
Pressure range	5-7 bar	5-7 bar
Sound level	69 dB(A)	69 dB(A)
Sound level with soundproof cover	56 dB(A)	56 dB(A)
Dimensions (H x W x D)	820 x 1100 x 600 mm	820 x 1100 x 600 mm
Dimensions with cover (H x W x D) **	1020 x 1245 x 725 mm	1020 x 1245 x 725 mm
Weight	118 kg	118 kg
Weight with soundproof cover	225 kg	225 kg
Order no. with soundproof cover	106000031	106000033

	META Air 650	META Air 650 Light	META Air 900
Order no.	106000036	106000038	106000040
Power supply (V AC)	400 V	400 V	400 V
Frequency	50/60 Hz	50/60 Hz	50/60 Hz
Electric motor power	6.6 kW	6.6 kW	10 kW
Delivery rate (5 bar)	660 l/min	750 l/min	780 l/min
Operating time	≤ 70 %	≤ 80 %	≤ 70 %
Tank capacity	200 l	200 l	270 l
Pressure range	5-7 bar	5-7 bar	5-7 bar
Sound level	72 dB(A)	72 dB(A)	75 dB(A)
Dimensions (H x W x D)	900 x 1450 x 820 mm	910 x 1100 x 600 mm	1030 x 1560 x 1000 mm
Weight	183 kg	173 kg	240 kg

\* available also with 60 Hz | \*\* The depth dimensions may vary if a condensate tank is present.

# COMPRESSORS FOR CAD/CAM MILLING SYSTEMS

Conventional dental compressors within the standard pressure range of 5 to 7 bar are unable to meet the requirements of many dental milling machines. CAD/CAM milling systems, however, require an operating pressure of up to 10 bar to ensure safety during tool changes, for example. META CAM compressors have been specifically designed for such systems, as they provide a pressure range of 8 to 10 bar. Equipped with membrane drying and a double filter system, they ensure the supply of oil-free, dry and perfectly hygienic compressed air, which is crucial for the quality of the end products.



## High pressure range up to 10 bar

META CAM compressors operate within a pressure range of 8 to 10 bar.

## High quality components in the motors

META CAM motors are equipped with specific components designed to withstand the loads within the high pressure range.

## Optional sound proof cover

Most of META CAM compressors are optionally available with a sound proof cover.

## The right choice

We are happy to assist you in choosing the right META CAM compressor for your specific milling or grinding machine. You can find further information at [www.metasys.com](http://www.metasys.com).

	META CAM 150	META CAM 250	META CAM 450	META CAM 650
Order no.	107000001	107000004	107000008	107000010
Power supply (V AC)	230 V	230 V	400 V	400 V
Frequency	50 Hz*	50 Hz*	50/60 Hz	50/60 Hz
Electric motor power	1.5 kW	2.2 kW	4.4 kW	6.6 kW
Delivery rate (5 bar)	152 l/min	225 l/min	450 l/min	660 l/min
Delivery rate (8 bar)	103 l/min	148 l/min	296 l/min	444 l/min
Operating time	≤ 50 %	≤ 50 %	≤ 50 %	≤ 50 %
Tank capacity	40 l	40 l	90 l	200 l
Pressure range	8 - 10 bar	8 - 10 bar	8 - 10 bar	8 - 10 bar
Sound level	66 dB(A)	66 dB(A)	69 dB(A)	73 dB(A)
Sound level with soundproof cover	53 dB(A)	53 dB(A)	56 dB(A)	-
Dimensions (H x W x D)	770 x 710 x 410 mm	810 x 710 x 410 mm	820 x 1100 x 600 mm	900 x 1450 x 820 mm
Dimensions with cover (H x W x D)**	915 x 750 x 530 mm	915 x 750 x 530 mm	1020 x 1245 x 725 mm	-
Weight	50 kg	58 kg	118 kg	183 kg
Weight with soundproof cover	98 kg	106 kg	220 kg	-
Order no. with soundproof cover	107000002	107000005	107000009	107000011

\* available also with 60 Hz | \*\* The depth dimensions may vary if a condensate tank is present.

When selecting a META CAM compressor, a compressed air requirement calculation must be carried out in advance, or a validation test must be conducted with the milling machine after installation.

# SERVICE AND MAINTENANCE

## Guarantee period

The guarantee period is 12 months. If the prescribed yearly maintenance, the “1500 hours” or the “3000 hours” maintenance is performed, the guarantee period may be extended by 1 year, but by no more than 2 years in total. The maximum possible guarantee period is therefore 3 years.

## Maintenance intervals

The maintenance intervals must be strictly adhered to. The following maintenance tasks are mandatory: yearly filter cartridge exchange (“filter cartridge - exchange kit“), the 3000 or 1500 hours maintenance (depending on compressor version). The required inspections have to be recorded in the equipment logbook. METASYS reserves the right to request those registrations to inspect maintenance logs.

## Maintenance kits

on request: [info@metasys.com](mailto:info@metasys.com)

(Please provide the module number and serial number of the compressor to be serviced.)

### 3000 hours kit + valve block (complete)

META Air Light (from META Air 70 Light),  
META CAM versions

### 1500 hours kit 24/30 + valve block (complete)

META Air 24/30

### Filter cartridge - exchange kit

All META Air, META Air Light, META CAM versions

## METASYS Soundproof Covers

Various soundproof covers are available for the respective META Air and META CAM versions to reduce the sound level to as low as 54 dB(A).

